



## OUR VISION



Top global provider of social development solutions.

## OUR MISSION



Provide professional expertise and technical services in planning and implementation of development projects.

Enhance the capability of institutions in mobilizing, managing, and advocating innovative and sustainable social and human resources development programs and projects.

## OUR GOAL

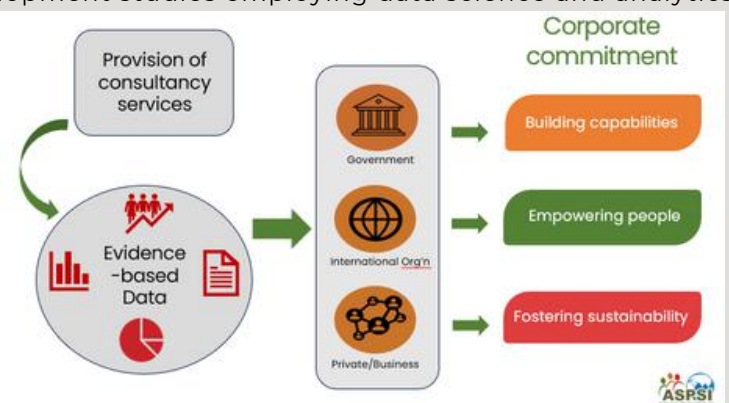


Uplift the socio-economic well-being of underserved communities.

# ABOUT ASPSI

The Asian Social Project Services, Inc. (ASPSI) is a private consultancy and training service provider based in Los Baños, Laguna, Philippines, catering to the underserved sectors of the society. In 2007, ASPSI was formally established as a stock corporation to be able to engage in the business of providing professional expertise and technical services in planning, implementation, monitoring and evaluation of development projects.

For almost two decades of consulting management experience, ASPSI has established its capability to implement social, economic, environment, and other development studies employing data science and analytics to produce evidence-based findings. As its core offering, ASPSI provides evidence-based data and research results that are utilized by government agencies, private sector organizations, and international bodies to inform decision-making, drive policy reforms, and guide the development of programs and projects. As a training service provider offering flexible management services and logistical support, ASPSI has also designed, and conducted training and other multidisciplinary staff development programs for its clients and partners locally and internationally. By providing these development solutions and strategies, ASPSI helps in building institutional capabilities, empowering marginalized communities, and promoting sustainable development - making a meaningful impact on the growth and resilience of underserved sectors in our society.



## OUR SERVICES

### CONSULTANCY SERVICES

ASPSI has been commissioned for monitoring and evaluation studies, baseline survey, mid-term evaluation, end-line study, program impact evaluation, environmental and social impact assessment, perception and awareness/communication studies, policy studies, market research, and governance and organizational development studies.

### TRAINING MANAGEMENT SERVICES

ASPSI offers customized training and study tour programs using adult learning methodologies to ensure effective knowledge, technology, and skills transfer.

### INDIVIDUAL PLACEMENT SERVICES

ASPSI monitors project opportunities, identifies and engages qualified consultants from its database of international and local experts, packages credentials, and provides in-country support and pre-departure assistance.



asiansocial.org



aspsiglobal@gmail.com



Asian Social Project Services Inc.



Asian Social Project Services Inc. (ASPSI)



049 536 3448



0917 819 6884



2Flr MG Bldg., 10001 Mt. Halcon St., Umali Subdivision, Batong Malake, Los Baños, Laguna

For 18 years, ASPSI has assisted in development projects and research studies funded by international organizations (Asian Development Bank (ADB), World Bank, United Nations Development Programme (UNDP), Winrock International, World Health Organization (WHO), British Council, Chemonics International, and World Food Programme (WFP); national government agencies such as the Department of Economy, Planning, and Development (DEPDev), Philippine Competition Commission (PCC), National Nutrition Council (NNC), Philippine Institute of Development Studies (PIDS), Agricultural Credit Policy Council (ACPC), Agricultural Training Institute (ATI), Bureau of Plant Industry (BPI), Department of Health (DOH), and National Center for Mental Health (NCMH); and some private organizations.

ASPSI was commissioned by the UNDP to provide technical assistance to key national government agencies (NGAs) on Evaluation Planning, Evaluability Assessment of Priority Development Programs, and the Design and Implementation of the Roll-out of the National Evaluation Policy Framework (NEPF) Guidelines. It involved mentoring the selected NGAs (Department of Public Works and Highways (DPWH), Department of Labor and Employment (DOLE), Department of Social Welfare and Development (DSWD), and Department of Education (DepEd) on various aspects of evaluation, including the following: needs assessment, formulation of NGA-specific mentoring/coaching plan, development of mentoring/coaching modules, drafting of evaluation plan, evaluability assessment, action planning, updating of evaluation plan, and addressing evaluability issues.

Moreover, ASPSI has successfully conducted a range of monitoring and evaluation studies, as well as impact assessments, utilizing quantitative, qualitative, and mixed-method research designs (Table 1).

**Table 1. ASPSI's completed monitoring and evaluation studies**

CLIENT	PROJECT TITLE
UNDP	<ul style="list-style-type: none"> <li>Impact Evaluation of the Department of Labor and Employment Integrated Livelihood Program</li> <li>Evaluation of the implementation of the policy on alternative work arrangements in selected government agencies and LGUs in the National Capital Region</li> <li>Evaluability Assessment of Micro, Small, and Medium Enterprise (MSME) Development Plan and Priority Programs under the MSME Development Plan with a Process Evaluation of Government Support</li> </ul>
World Bank	<ul style="list-style-type: none"> <li>A Study on the 4Ps Cash Transfers to Transaction Accounts in the Philippines</li> </ul>
WFP	<ul style="list-style-type: none"> <li>Multi-hazard Impact Based Forecasting and Early Warning System for the Philippines: Resilience and Risk Perception Survey</li> </ul>
DepDEV	<ul style="list-style-type: none"> <li>Study in Measuring Awareness and Perception of NEDA, AmBisyon Natin 2040, and Philippine Development Plan</li> </ul>
DepDEV IV-A	<ul style="list-style-type: none"> <li>Impact Evaluation Study of Laguna de Bay Institutional Strengthening and Community Participation (LISCOP) Project in CALABARZON</li> </ul>
PIDS	<ul style="list-style-type: none"> <li>Primary Data Collection for Terminal Evaluation Cum Impact Assessment of the SAAD Program</li> <li>Language of Instruction and Transition in Education Systems</li> <li>Consulting Service for 4Ps 4th Impact Evaluation Regression Discontinuity Design Survey</li> <li>Endline Survey for the Impact Evaluation of the Convergence on Value Chain Enhancement for Rural Growth and Empowerment (ConVERGE) Project</li> </ul>
ATI	<ul style="list-style-type: none"> <li>Evaluation of the ATI's Farmer-Scientist Training Program (FSTP) Implementation</li> <li>Agriculture and Fisheries Extension (AFE) Results-Based Monitoring and Evaluation (RBME) Study</li> </ul>
ACPC	<ul style="list-style-type: none"> <li>Evaluation of the Expanded SURE Aid and Recovery Project (SURE COVID-19 Program)</li> <li>Mid-term Evaluation of Production Loan Easy Access (PLEA) and Survival and Recovery (SURE) Program</li> <li>Baseline Study of Agri-Negosyo Loan and Kapital Access for Young Agripreneurs Programs</li> <li>Rapid Assessment of Agrarian Production Credit Program (APCP) Past Due Accounts</li> <li>Mid-term Evaluation of the Sikat-Saka Program</li> </ul>
BPI	<ul style="list-style-type: none"> <li>Consulting Services for the Benchmarking of the Corn Seed Industry in the Philippines</li> </ul>
DOH	<ul style="list-style-type: none"> <li>Technical Assistance for Conducting a Mixed-Methods Longitudinal Prospective Study (Household Survey) on ICCs/IPs COVID-19 Vaccination Coverage through the Philippines COVID-19 Emergency Response Project funded by World Bank</li> <li>Consulting Services for the Conduct of National Survey on Oral Health (Phases 1 and 2)</li> <li>Development and Implementation of Health Promotion Capacity-Building for Province- and City-Wide Health System (PCWHS) Implementers</li> <li>Conduct and Outcome Assessment of Basic Course on Patient Education for Health Education and Promotion Officers (HEPOs) and HEPO Designates</li> </ul>
NCMH	<ul style="list-style-type: none"> <li>Nationwide Survey on the Perception and Attitude of the General Public on Mental Health – CY 2018</li> </ul>
PCC	<ul style="list-style-type: none"> <li>2021 National Survey on the Awareness of Private Firms on the Philippine Competition Act and the Philippine Competition Commission</li> <li>Rapid Survey on Household Preference on Over-The-Counter Pharmaceutical Products</li> <li>Engagement of a Consulting/Survey Firm for the F.Y. 2020 PCC Client Satisfaction Survey</li> </ul>
British Council	<ul style="list-style-type: none"> <li>Technical Consultant for CSO-SEED Final Evaluation with Case Studies</li> </ul>
Chemonics Intl.	<ul style="list-style-type: none"> <li>MSME Digital Maturity and Adoption Baseline Survey</li> </ul>
Winrock Intl.	<ul style="list-style-type: none"> <li>Final Evaluation of the Building Safe Agricultural Food Enterprises (BSAFE) Project in the Philippines</li> <li>Mid-Term Evaluation of the Building Safe Agricultural Food Enterprises (BSAFE) Project in the Philippines</li> <li>Baseline Study for the Building Safe Agricultural Food Enterprises (BSAFE) Project in the Philippines</li> <li>Endline Evaluation of the Philippine Cold Chain Project (PCCP)</li> </ul>